



HEALTH REPORT

HEALTH REPORT



Customer name

MARIARI GIRLS KDG 903C

VIN

JALFSR90NN7000053

Travel distance

10,811 km



Good



Attention



Careful Attention

Timing Of Next Recommended Inspection



Recommended inspection interval

12/07/2023

Travel distance (estimate)

14,016 km

This vehicle is classified as a General Travel type. Normal usage is anticipated. Refer to the other report items, and continue to carry out the scheduled maintenance.

Severity Condition Summary



Vehicle operation type



Trailer



Start/stop frequency



Mountain travel



Operation in cold areas



Inspection items on this vehicle



N/A



Transmission/transfer gear oil, clutch fluid, automatic transmission fluid



Brake lining wear, brake drum wear or damage, disc brake pad wear, brake disc wear



Exhaust pipe and mounting looseness



Universal joint wear and spline of propeller shaft



Differential gear oil, rear wheel hub bearing oil



Steering linkage damage to loose or excessive play, king pin



Leaf spring U-bolt nut, air suspension's beam bolt nuts/ U-bolt nuts



N/A

* The necessary maintenance items vary depending on the vehicle. For details, be sure to refer to the Owner's Manual.

Summary Of Vehicle Operation



Fuel economy



Brake pedal operation



Exhaust brake operation



Accelerator pedal operation (acceleration)



Accelerator pedal operation (accelerator position)



Recent fuel economy


3.62 km/liter

Fuel Consumed

2989 liter



General Information

Items		Data
Customer name		MARIARI GIRLS KDG 903C
Number of vehicles in possession		TF/UC: 0, N: 0, C/E: 0, F/G: 1, Bus: 0
VIN		JALFSR90NN7000053
Travel distance		10,811 km
Total times data has been acquired		2
Date of report		9/8/2023, 12:33:03 PM
	Rear body type	Truck Bus
Equipment Installed	PTO	No
	DPD (DPF)	No

Analysis points

Production

1st time



Date of data acquisition

Production

09/08/2023

Travel distance

0 km

10,811 km



Timing Of Next Recommended Inspection

Timing of recommended maintenance



General



Inspection Date 09/08/2023
Travel distance 10,811 km
Duration of PTO operation 0 hrs.

Inspection Date 12/07/2023
Travel distance (estimate) 14,016 km

Inspection Date	12/07/2023	The recommended date for the vehicle's next inspection is written to the left.			
R/i/i* (Recommended inspection interval)	10,000	km	90	days	
This vehicle's R/i/i*	3,206	km	90	days	
Yearly travel distance (estimate)	13,000 km	The yearly travel distance for this vehicle is written to the left. The next appropriate recommended inspection date is informed based on this value.			



Vehicle Operation Type

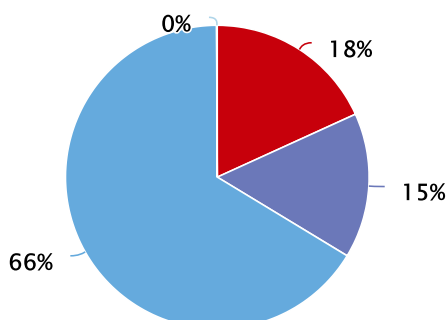
This vehicle is classified as a General Travel type. Normal usage is anticipated. Refer to the other report items, and continue to carry out the scheduled maintenance.



Breakdown of engine operation hours

Classification result

General travel



Idling (5 min or more)	18 %
Traffic congestion/slow travel	15 %
General travel	66 %
Fast travel	0 %

Vehicle operation time	491 hrs
PTO operation time	0 hrs
PTO operation ratio	0 %



Fuel Economy And Running Cost

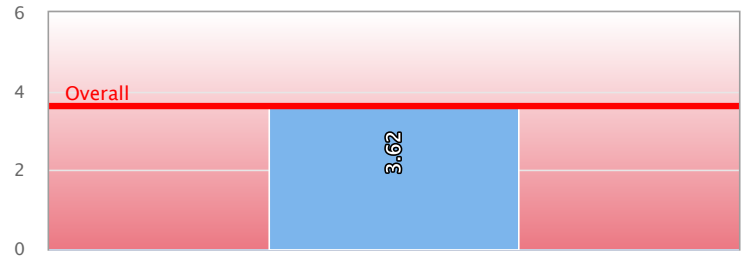
Not enough data to compare. Fuel Consumption Data is as listed blow. This data can be compared with previous reports if the Health Report was produced multiple times in the past.



Recent fuel economy

3.62
km/liter

Fuel price 175.1 (KSH/ liter)



	Overall	1st time
Fuel economy (km/liter)	3.62	3.62
Fuel cost (KSH/ km)	48.39	48.39
Travel distance (km)	10,810.53	10,810.53



Start/Stop Frequency

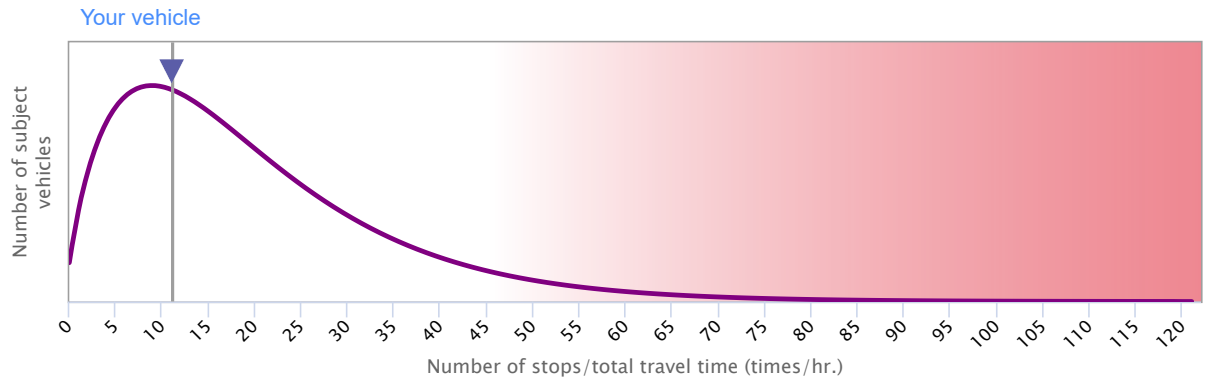
The number of stops for this vehicle is within the typical range. Get the appropriate inspections and maintenance according to the other report items and the Owner's Manual.



Number of stops per hour of driving

Number of stops per driven hour

11.2 Times/hr.



Mountain Travel

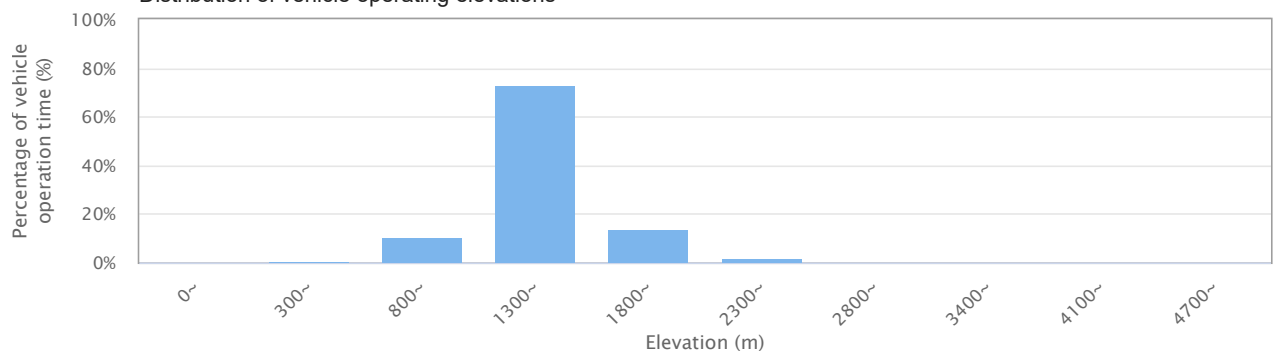
Since this vehicle shows wider range in the distribution of operating elevations, it may be driving extensively on mountain roads. When driving often on mountain roads, we recommend more frequent maintenance and inspections of the exhaust system, transmission, and brakes than the normal schedule.



Extensive driving on mountain roads (anticipated)

Yes

Distribution of vehicle operating elevations





Operation In Cold Areas

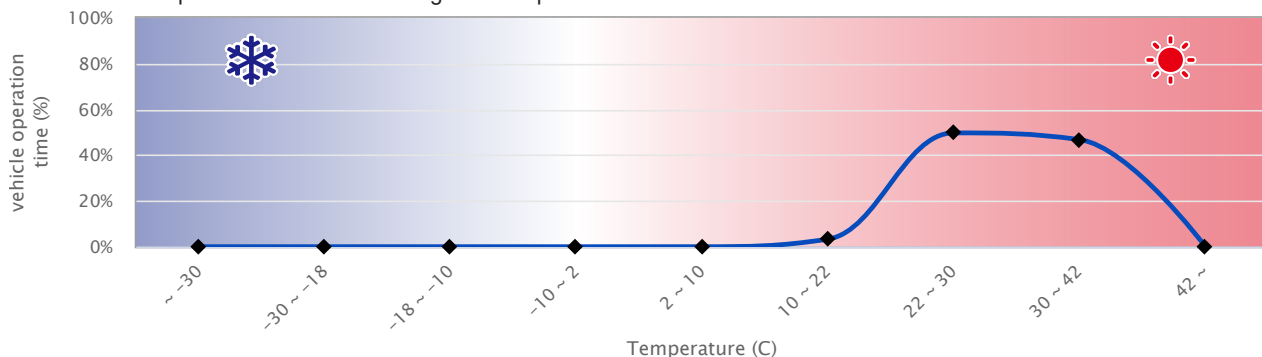
The temperature distribution during operation of this vehicle is within the typical range. The vehicle must be inspected and maintained according to the other items on this report and the Owner's Manual.



Operation in cold climate areas

No

Temperature distribution during vehicle operation



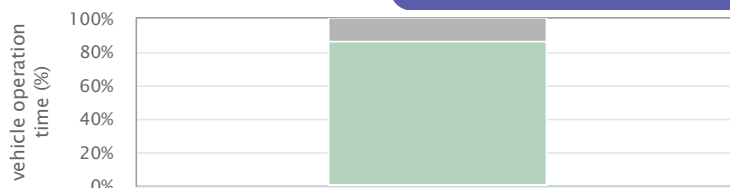
Brake Pedal Operation

The brake use for this vehicle is within the typical range. Get inspections and maintenance according to the other report items and the Owner's Manual.



Recent number of times of sudden braking

32 times



Distribution of brake operation

	Depressing accelerator and brake pedal in acceleration
	Brake operation not sensed by passenger
	Brake operation not discomforting to passenger
	Sudden brake operation
Total braking (times)	28,017
Total sudden braking (times)	32

1st time
13.35%
85.42%
1.11%
0.11%
28,017
32



Exhaust Brake Operation

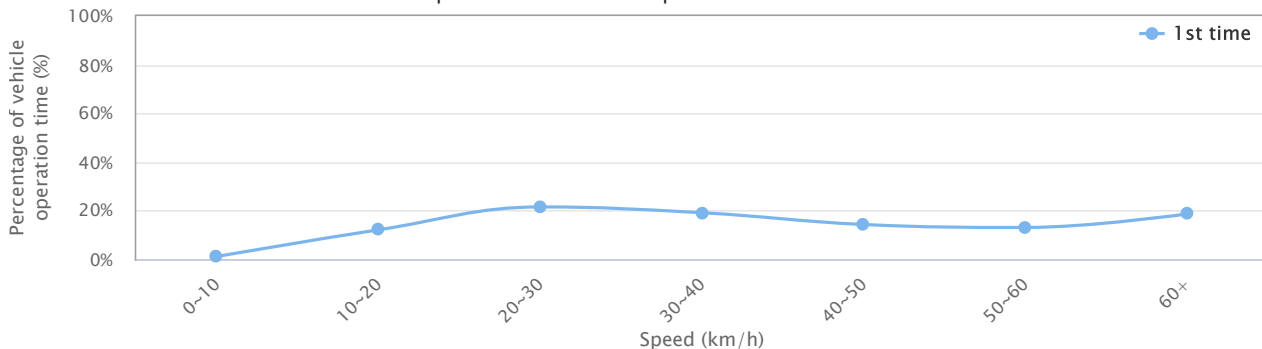
The usage of the exhaust brake for this vehicle is within the typical range. Use of exhaust brake is effective for safe driving and preserving the foot brakes so it should be used frequently. And to prevent impacting the fuel economy with use, be diligent in flipping the switch on and off.



Number of times of exhaust brake operation

47657 times

Distribution of exhaust brake operation ratio at each speed level





Accelerator Pedal Operation (Acceleration)

The distribution of acceleration for this vehicle is within the typical range. Get inspections and maintenance according to the other report items and the Owner's Manual.



Recent number of times of sudden acceleration

122 Times

Percentage of vehicle operation time (%)



Distribution of acceleration A/O* (Acceleration Operation)

A/O* not sensed by passenger
A/O* not discomforting to passenger
Sudden acceleration
Total acceleration (times)
Total sudden acceleration (times)

1st time
98.53%
1.46%
0.02%
807,491
122



Accelerator Pedal Operation (Accelerator Position)

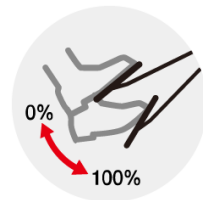
The ideal acceleration operation should follow the dotted line for fuel-efficient driving. The accelerator level is being kept relatively small for good fuel efficiency, but there is a bit more possibility for improvement. Keep the accelerator level as small as possible, and if using a manual transmission vehicle, shift up quickly to improve fuel efficiency.



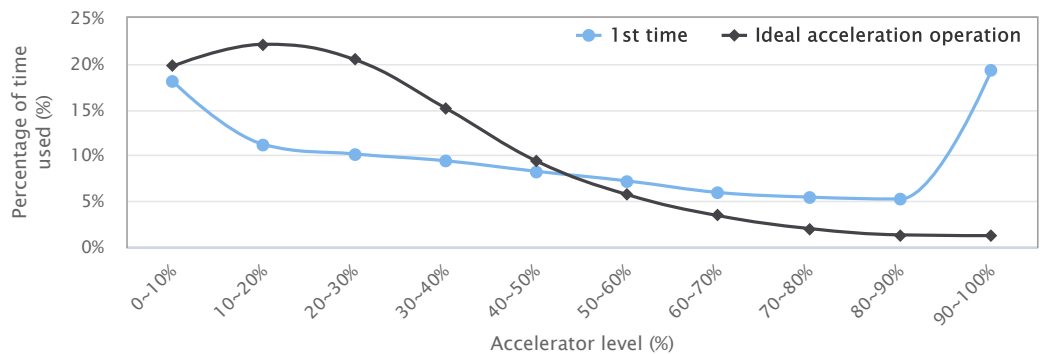
How the accelerator pedal is used

Small improvement is still possible

Illustration



Accelerator level distribution



Dealer Information

ISUZU

KENYA COACH INDUSTRIES LTD

East Gate Road, Off Mombasa Road
PO Box 18354 Nairobi Kenya
Tel: +254 20 553 770 Mob: +254 722 237 231
Email: info@kci.co.ke Website: www.kci.co.ke



VIN: JALFSR90NN7000053

Failure status list

Disclaimer: Information contained within this report is for the purpose of obtaining supplemental diagnostic information used for servicing or repairing the vehicle. Our Privacy Policy: <https://www.isuzu.co.jp/world/site/privacy.html>



Routine Check

Belts

Check for any stretching, cracks, and damage of belts.

☐ OK ☐

Wipers

Check that wipers operate correctly without noise. Check links for looseness and vibration.

☐ OK ☐

Engine leaks

Check heater hoses, radiator rubber hoses, and their attachments for leaks and related damage. Check the water pump for leaks.

☐ OK ☐

Tire tread

Check tires for abnormal wear, damage and tire tread.

☐ OK ☐

Other

☐ OK ☐

Clutch

Check clutch pedal play and the clutch fluid amount.

☐ OK ☐

Battery

Check the battery fluid level. Allow starter to rotate to check if engine starts and runs normally.

☐ OK ☐

Shift rod

Check ball joints for any knocking. Check boots for any cracking. Check lock nuts for looseness.

☐ OK ☐

Condensation of water in air tank

Pull the drain cock ring and check the amount of drainage.

☐ OK ☐

MEMO

Date of check

Company name

